

Do owners know how impulsive their dogs are?

Jeffrey R. Stevens¹, Madeline Mathias¹, Megan Herridge¹, Kylie Hughes-Duvall¹, London M. Wolff¹, & McKenna Yohe¹

¹ University of Nebraska-Lincoln

Supplementary Materials

Table S1
Dog owner demographic information

	Study 1 (N=65)	Study 2 (N=43)
Gender		
Female	49 (76.6%)	39 (90.7%)
Male	15 (23.4%)	4 (9.3%)
Nonbinary	0 (0%)	0 (0%)
Marital status		
Single	20 (31.2%)	18 (41.9%)
Married	40 (62.5%)	22 (51.2%)
Separated/divorced	4 (6.2%)	2 (4.7%)
Widowed	0 (0%)	1 (2.3%)
Have other dogs		
Yes	34 (53.1%)	21 (48.8%)
No	30 (46.9%)	22 (51.2%)
Household income		
<\$25,000	6 (9.5%)	9 (20.9%)
\$25,001-\$50,000	11 (17.5%)	5 (11.6%)
\$50,001-\$75,000	8 (12.7%)	7 (16.3%)
\$75,001-\$100,000	16 (25.4%)	2 (4.7%)
>\$100,000	19 (30.2%)	14 (32.6%)
Prefer not to answer	3 (4.8%)	6 (14.0%)

Correspondence concerning this article should be addressed to Jeffrey R. Stevens, B83 East Stadium, University of Nebraska, Lincoln, Lincoln, NE, USA 68588. ORCID 0000-0003-2375-1360. E-mail: jeffrey.r.stevens@gmail.com

Table S2

Scale reliability values

Scale	Study 1	Study 2
Bennett and Rohlf disobedience	0.85	–
Bennett and Rohlf aggression	0.89	–
Bennett and Rohlf nervousness	0.90	–
Bennett and Rohlf destructiveness	0.57	–
Bennett and Rohlf excitability	0.35	–
Hiby et al. obedience	0.79	0.77
Hiby et al. problem behaviors	0.74	–
DIAS overall	0.86	0.83
DIAS behavioral regulation	0.85	0.83
DIAS aggression	0.68	0.72
DIAS responsiveness	0.59	0.46
MDORS	0.71	–
Owner extraversion*	0.80	0.69
Owner agreeableness*	0.31	0.54
Owner conscientiousness*	0.45	0.37
Owner stability*	0.65	0.70
Owner openness*	0.24	0.36
Cognitive reflection task	0.61	–
Berlin numeracy test	0.48	–
CBARQ training	–	0.77

Note: Values represent Revelle's ω_T except owner personality scales (signaled with *), which use Cronbach's α .

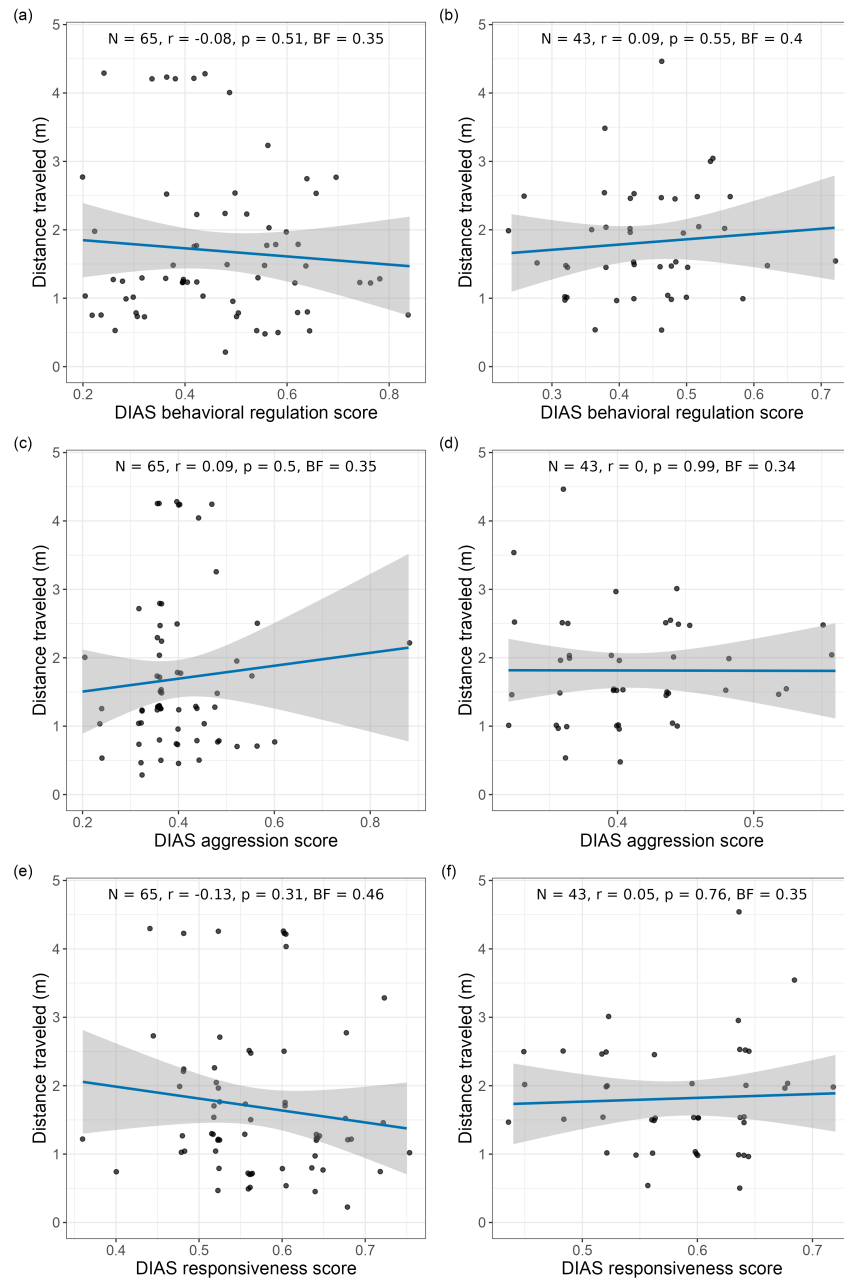


Figure S1. Relationship between distance traveled and DIAS subscales. We found no correlation between distance traveled and the behavioral regulation subscale in (a) Study 1 or (b) Study 2 or the aggression subscale in (c) Study 1 or (d) Study 2, or the responsiveness subscale in (e) Study 1 or (f) Study 2. Dots represent individual dog data points, lines represent best fitting linear regression models, and bands represent 95% confidence intervals around the regression model.

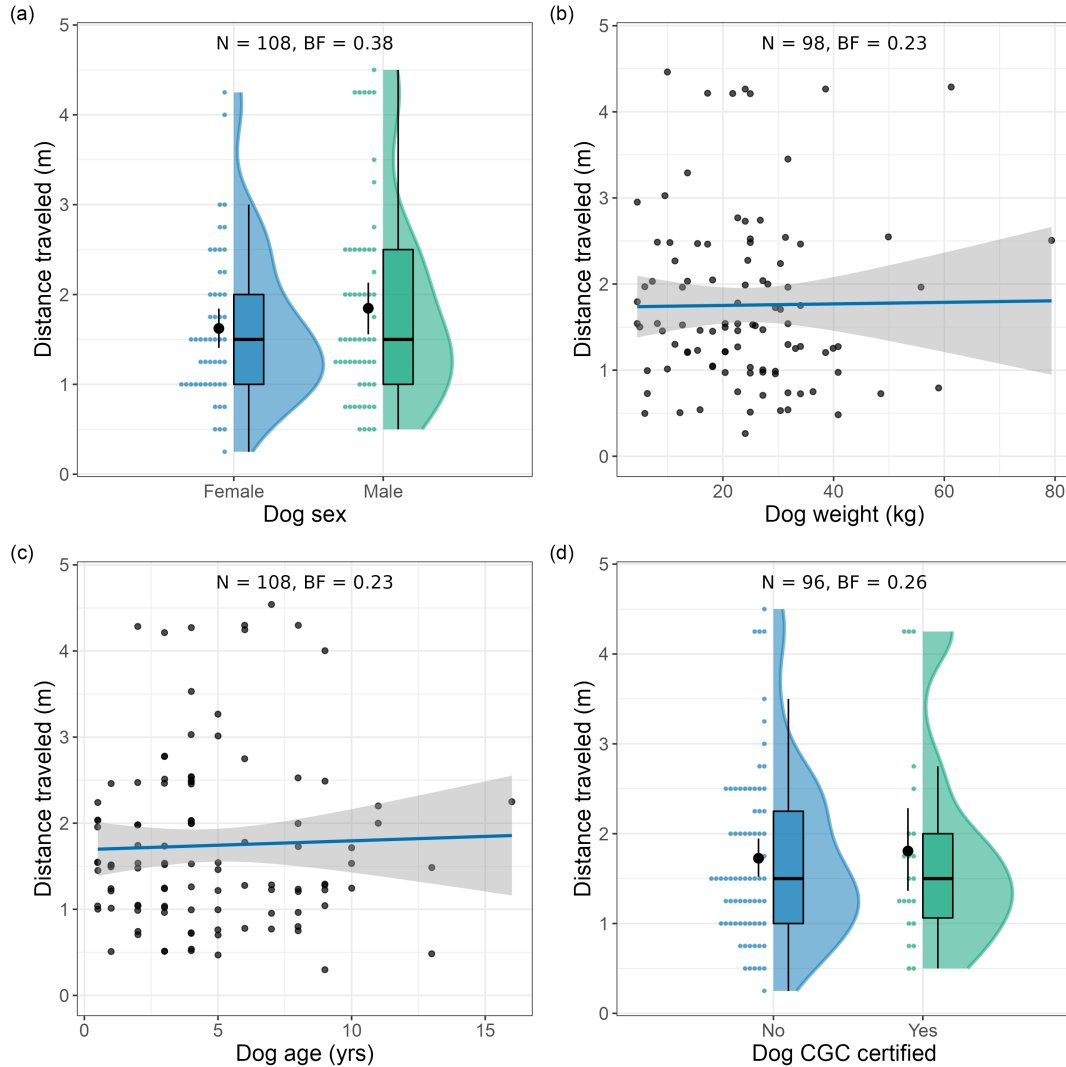


Figure S2. Relationship between distance traveled and dog characteristics. Distance traveled was not related to dog (a) sex, (b) weight, (c) age, or (d) AKC Canine Good Citizen status. For correlations, dots represent individual dog data points, lines represent best fitting linear regression models, and bands represent 95% confidence intervals around the regression model. For group comparisons, dots represent individual dog data points, filled shapes represent density distributions, filled dots and error bars represent mean and 95% confidence intervals, boxes represent interquartile range, lines within boxes represent medians, and whiskers represent 1.5 times the interquartile range.

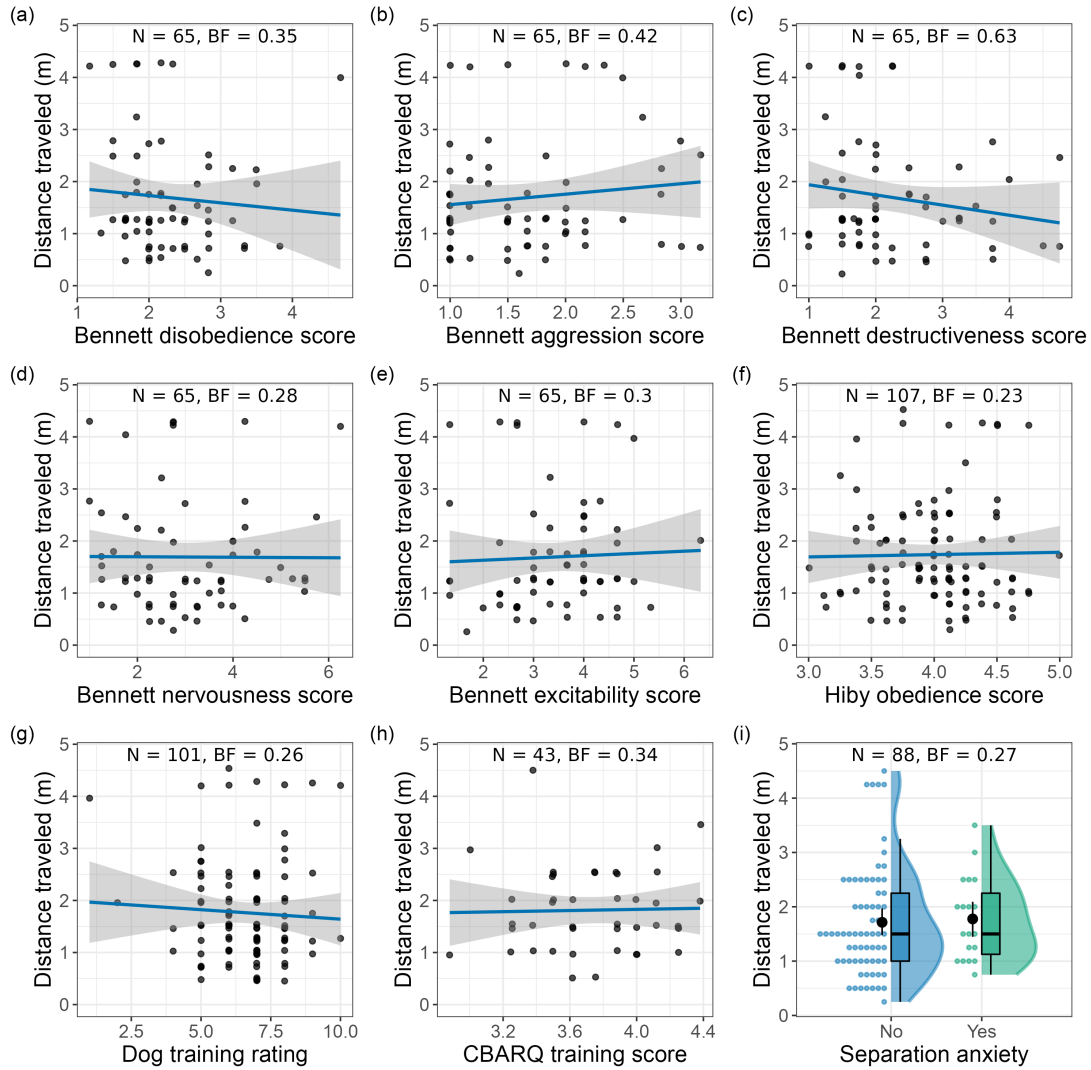


Figure S3. Relationship between distance traveled and dog behavior. Distance traveled was not related to (a-e) scores on Bennett and Rolhf's (2007) behavior problems scales, (f) Hiby et al.'s (2004) obedience scale, (g-h) measures of training, or (i) ratings of separation anxiety. For correlations, dots represent individual dog data points, lines represent best fitting linear regression models, and bands represent 95% confidence intervals around the regression model. For group comparisons, dots represent individual dog data points, filled shapes represent density distributions, filled dots and error bars represent mean and 95% confidence intervals, boxes represent interquartile range, lines within boxes represent medians, and whiskers represent 1.5 times the interquartile range.

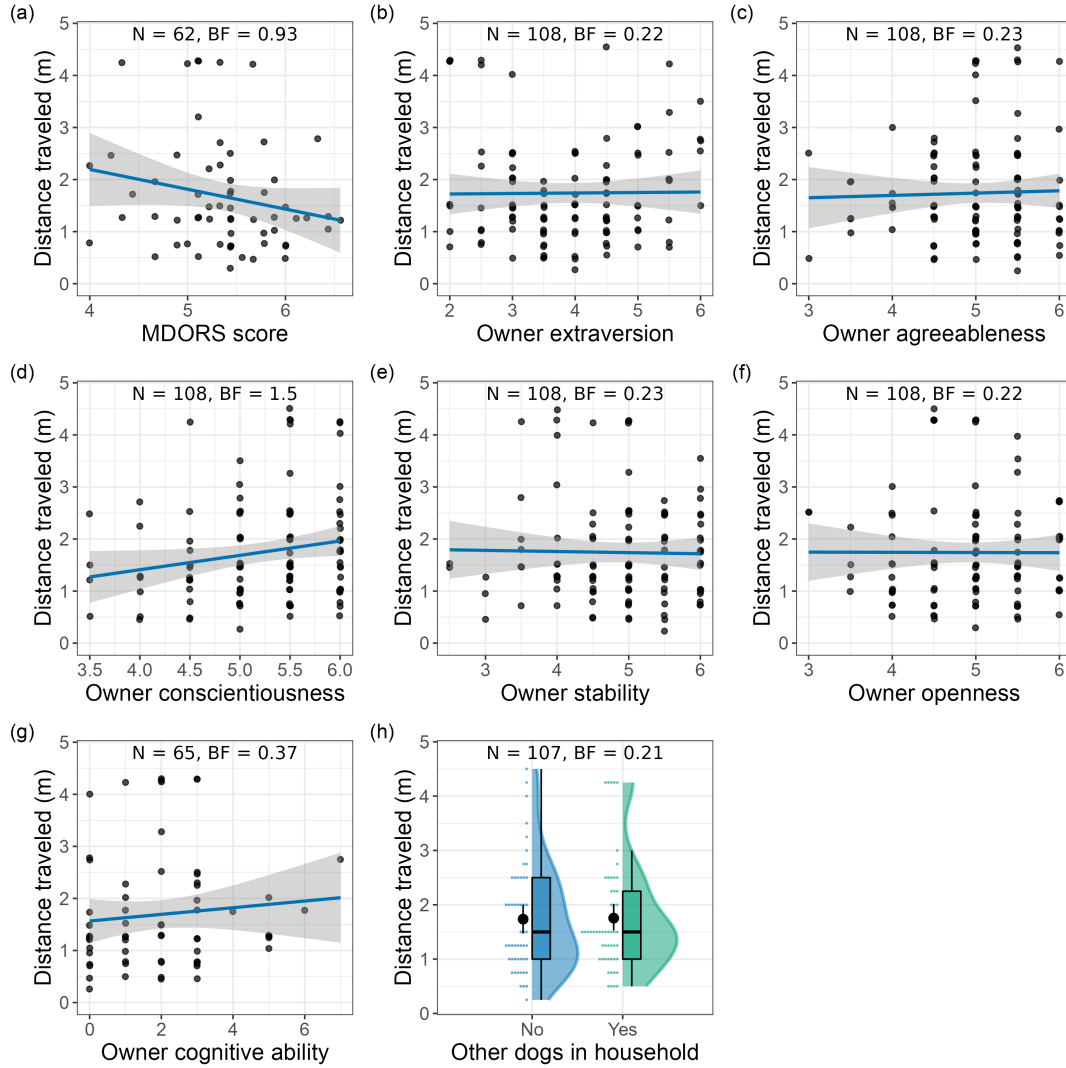


Figure S4. Relationship between distance travelled and owner characteristics. Distance travelled was not related to dog (a) Monash Dog Owner Relationship Score, (b-f) owner personality, (g) owner cognitive ability, or (h) whether owners had other dogs in the household. For correlations, dots represent individual dog data points, lines represent best fitting linear regression models, and bands represent 95% confidence intervals around the regression model. For group comparisons, dots represent individual dog data points, filled shapes represent density distributions, filled dots and error bars represent mean and 95% confidence intervals, boxes represent interquartile range, lines within boxes represent medians, and whiskers represent 1.5 times the interquartile range.